

Aker BioMarine

A promising start for Superba™



Annual Shareholders' Meeting 2008

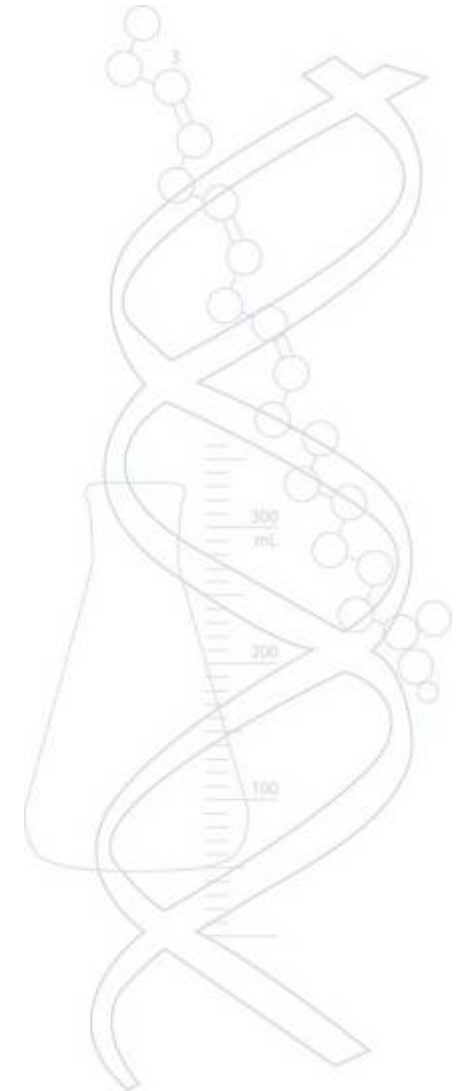
Aaron Kramer, CFO

The preferred partner



Agenda

- Highlights 2008
- Financial figures for 2008
- Allocation of the loss for 2008



The preferred partner

 **AkerBioMarine™**

Highlights 2008



Sharpening Focus and a promising start for Superba™

- Promising debut for Superba™
 - Superba™ Krill Oil omega-3 dietary supplement; 2009 sales off to promising start
 - New krill concentrate, *Superba™ Krill Caps*, to be sold directly to US consumers beginning in 2009
 - *Superba™ Krill Oil* and *Superba™ Krill Caps* will be introduced in additional markets
- Breakthrough for new production system
 - Sustainable harvesting and production of health products becomes sole business focus
 - Cost-effective production breakthrough achieved for krill concentrate, a new powder product manufactured onboard

Highlights 2008



Sharpening Focus and a promising start for Superba™

- Documenting health benefits
 - Preliminary clinical studies indicate that uptake of Superba™ Krill Oil's omega-3 outperforms omega-3 from fish oil, including significant improvement in the Omega-3 Index
 - Studies continue to document that omega-3 from krill's superior performance for promoting health in specific disease categories
- Documenting value of Qrill™ for aquaculture
 - Studies continue to show that Qrill™ use in multiple species and life-stages improves financial performance for farmers
- Extending cooperation environmental organizations
 - Extended cooperation with WWF
 - Working in close collaboration with CCALMR
- Strong foundations for strong targets
 - Halvard Muri named new CEO, to replace interim CEO Kjell Inge Røkke on April 4, 2009

Financial figures for 2008



The preferred partner



The Aker BioMarine Group: Consolidated profit and loss accounts

Amounts in NOK million	2008	Re-presented 2007
Operating income	85	75
Cost of goods sold	(9)	(4)
Salaries and personnel expenses	(59)	(44)
Other operating expenses	(170)	(123)
Operating loss before depreciation and amortization	(152)	(96)
Depreciation and amortization	(55)	(51)
Impairment changes and non recurring items	20	(0)
Operating loss	(187)	(147)
Financial income	294	210
Financial expense	(370)	(222)
Loss before tax expenses	(263)	(159)
Income tax (expenses)/benefit	(81)	45
Loss after tax expenses from continuing operations	(344)	(114)
Discontinued operations:		
Loss for the period from discontinued operations (net of tax)	(86)	(45)
Loss for the period	(431)	(159)

The preferred partner



The Aker BioMarine Group: Consolidated Balance Sheet as of 31 December

Amounts in NOK million	2008	2007
ASSETS		
Total non-current assets	1 565	1 505
Total current assets	359	531
Total assets	1 924	2 036
EQUITY AND LIABILITIES		
Total equity	500	890
Total non-current liabilities	1 263	978
Total current liabilities	161	168
Total liabilities	1 424	1 146
Total equity and liabilities	1 924	2 036



The preferred partner

Allocation of loss for the year



The preferred partner

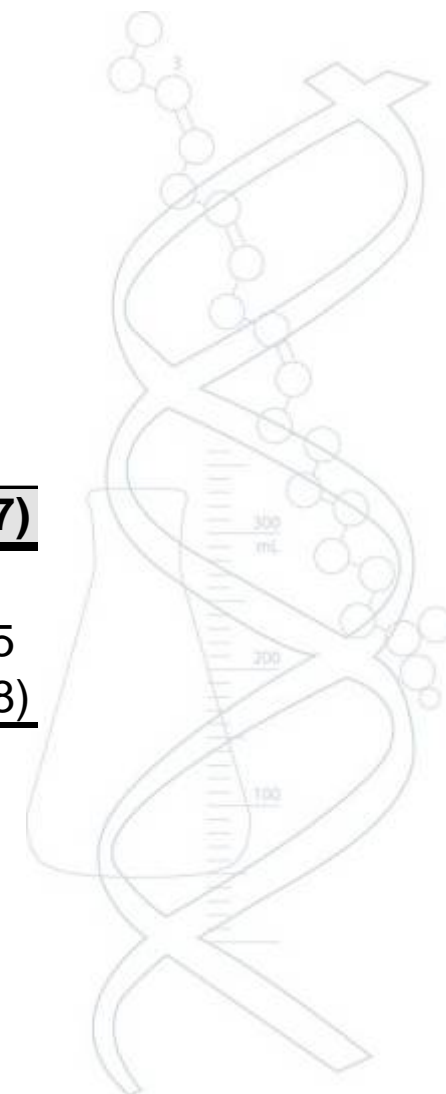


Allocation of loss for the year

- Parent company

The Aker BioMarine ASA

Loss for the year	(3 757)
Transferred from share premium reserve	4 405
Transferred from retained earnings	(648)



The preferred partner



Valgkomiteens innstilling

Ordinær generalforsamling i Aker BioMarine ASA
Oslo, 2. april 2009



The preferred partner

 **AkerBioMarine™**

Valgkomiteens arbeid

- Sammensetning
 - Kjell Inge Røkke (formann)
 - Kjeld Rimberg
 - Gerhard Heiberg
- Arbeidsform
 - Tre møter avholdt
 - Vurdert styrets arbeid
 - Mottatt innspill fra enkeltaksjonærer



Styrets sammensetning



Leif-Arne
Langøy
(styreleder)



Nils Are K
Lysø



Wenche
Rolfsen



Helle Kruse
Nielsen



Tore
Heldrup
Rasmussen

På valg, foreslått gjenvalgt
Tar ikke gjenvalg



The preferred partner

Foreslått ny styreformann



Kjell Inge Røkke

Entrepreneur and industrialist Kjell Inge Røkke (born 1958), Aker ASA's main owner, has been a driving force in the development of Aker since the 1990s. Mr. Røkke launched his business career with the purchase of a 69-foot trawler in the United States in 1982, and gradually built a leading worldwide fisheries business: harvesting and ocean-going processing of white fish. In 1996, Mr. Røkke purchased enough Aker shares to become Aker's largest shareholder. Mr. Røkke is a Norwegian citizen.

Foreslått nytt styremedlem



Bjørn Flatgård (born 1949) runs his own business, the principal activities of which are participation on Boards of directors and investing. Flatgård was President and CEO of Elopak AS from 1996 to 2007. He previously served as President and CEO of Nycomed Pharma and EVP of Hafslund Nycomed and Nycomed AS. Flatgård holds multiple Board positions in major Norwegian companies. Flatgård has an MSc in Chemical Engineering from the Norwegian University of Science and Technology and a degree from the Norwegian School of Management. Flatgård is a Norwegian citizen.

Ny styresammensetning



**Kjell Inge
Røkke**
(styreleder)



**Bjørn
Flatgård**



**Wenche
Rolfsen**



**Helle Kruse
Nielsen**



**Tore
Heldrup
Rasmussen**

Nye styremedlemmer



The preferred partner

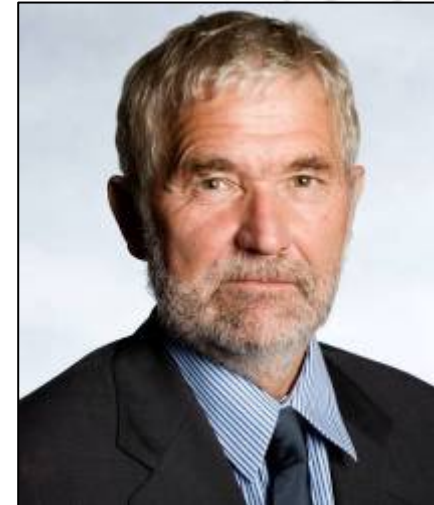
Valg av valgkomité



**Leif-Arne
Langøy
(formann)**



**Gerhard
Heiberg**



**Kjeld
Rimberg**

På valg, foreslått gjenvalgt
Foreslått valgt



The preferred partner

Honorarer - valgkomiteens forslag

- **Styre**
 - Formann kr. 300.000
 - Styremedlemmer: kr. 200.000

- **Valgkomité**
 - Formann og medlemmer kr. 30.000





The preferred partner